

TENDER PINK

PASSION FOR AESTHETICS



Tender Pink is the most innovative system to reproduce the gingival tissue in dental office and laboratory.

4 shades: Pink Dark, Pink Light, Pink Orange, Pink Transparent.

The chromatic effect can be enhanced by use of Stain Flow Blue, White and Red that can be also mixed between them.

Pink Transparent



Pink Light



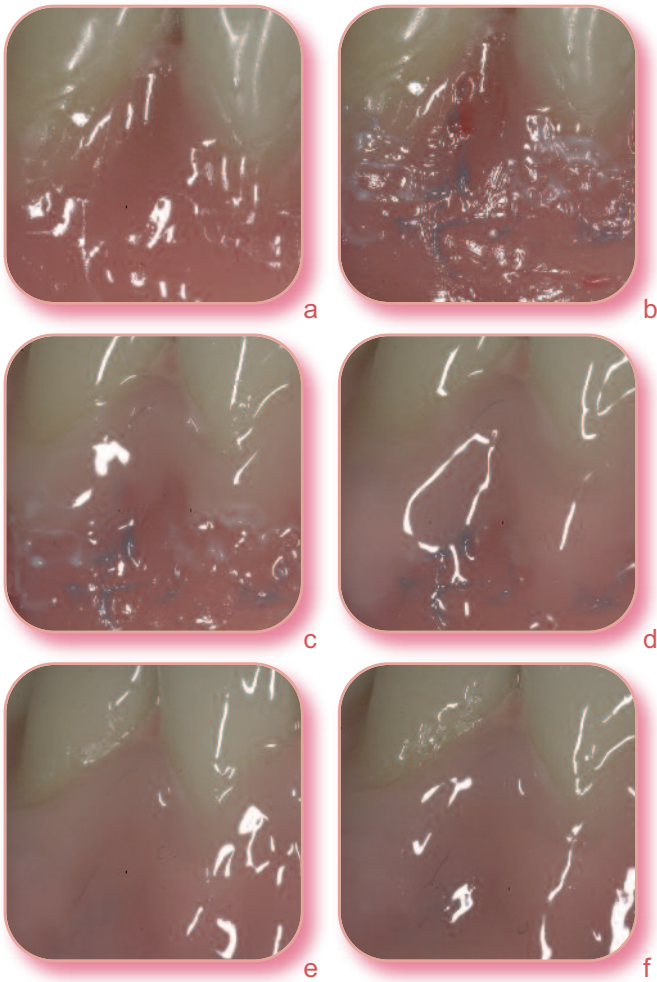
Pink Dark



Pink Orange



Gum characterization in removable and implant prosthesis



- a. Temp Bonding Fluid allows the adhesion of methyl methacrylate resin to light curing composite.
- b. Stain Flow **White** increases the opacity and shade of **ischemic papilla** or in bone prominence area, Stain Flow **Red** increases the chromaticity of pink composite, **simulating veins**, Stain Flow **Blue** increases effects in **foramen** and **small veins**.
- c. Tender Pink **Transparent** reproduces the **cervical area** where the gum cover the tooth and not the bone.
- d. Tender Pink **Light** reproduces the area over the **root** where the gum is tight and transparent.
- e. Tender Pink **Dark** reproduces area of the gum less tight and less adherent to the bone, **highly blood supplied** with a red blue shade in the area of the foramen.
- f. Tender Pink **Orange** (available also as **Flow**) is used as first layer or combined with Stain Flow White reproduces the typical colour of **bone prominence of natural flanges**.

New Stain: **Violet**

Ideal for reproduction of veins in deep gingival. It can increase the chromaticity of Tender **Dark** composite, by mixing them together.

Tender Pink The system for gum creation and characterization

Shield

ETOP Self Adhesive Pink Opaque

Shades for gum characterization

COSSTAIN1N WHITE stain refill

COSSTAIN3N BLUE stain refill

COSSTAINR RED stain refill

COSSTAINV VIOLET stain refill

Tender Pink composite with low wear

ETP Tender Pink Orange

ETPL Tender Pink Light

ETPD Tender Pink Dark

ETPT Tender Pink Transparent

Tender Pink flow with low wear

ETFP Tender Pink Orange Flow



TENDERPKIT Tender Pink Kit
1 Tender Pink Opaque
3 Stain Flow (blue, red, white)
4 Tender Pink Shades

ETPK Tender Pink Kit
1 Tender Pink Opaque
4 Tender Pink Shades

Adhesion methyl methacrylate resin to composite

TEMPF Temp Bonding Fluid

Adhesion ceramic to composite

ETBOND Tender Bonding

ETOCLEAR Tender Paste Opaque Clear