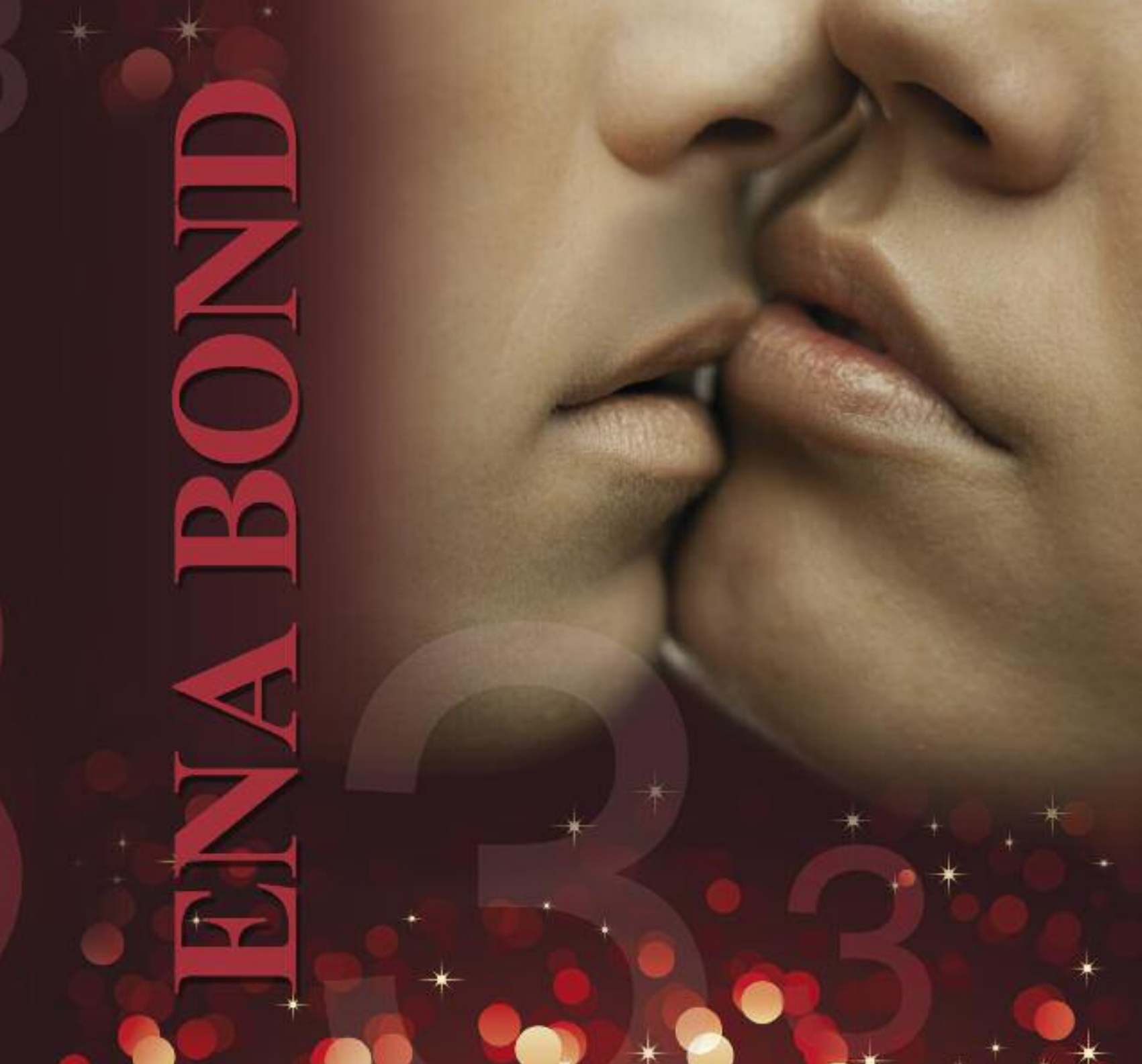


# ENYA BOND

# 33



# ADHESION: **3** SAFE OPTIONS

## ETCH & RINSE

### ONE-BOTTLE

- Aesthetics & Retention
- Fluorescent as natural tooth
- Ethanol based special composition
- Dual catalyst used with dual composite
- **Bond strenght values over the average industry: 30 MPa\***

\* Test made by University of Chieti - Italy - Prof. Camillo D'Arcangelo



## ETCH & RINSE

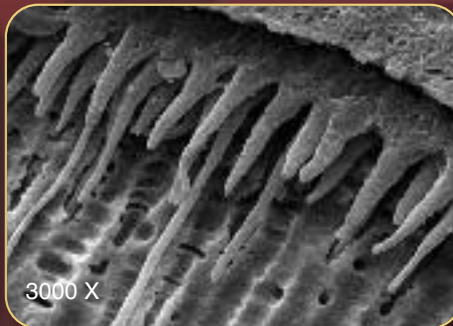
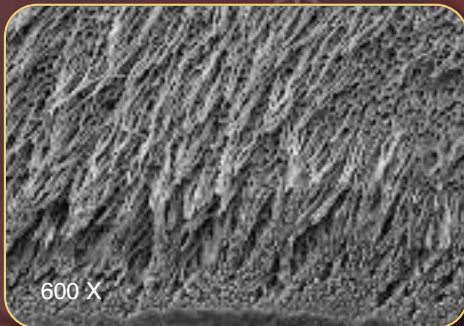
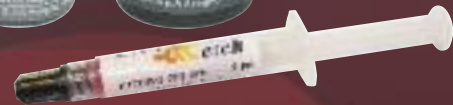
### TWO-BOTTLE

#### IV generation two-bottle adhesive

You can get great adhesion results and a perfect seal by using Ena Bond as a primer and Ena Seal as second layer of unfilled adhesive resin; Ena Bond becomes a two-bottle adhesive system

- **Excellent adhesion values on dentine: 24 MPa\***

\* Test made by University of Chieti - Italy - Prof. Camillo D'Arcangelo



Images at SEM 600X and 3000X of the hybrid layer obtained with the two-bottle technique; note quantity and depth of resin tags  
University of Chieti - Italy  
(Prof. Camillo D'Arcangelo)

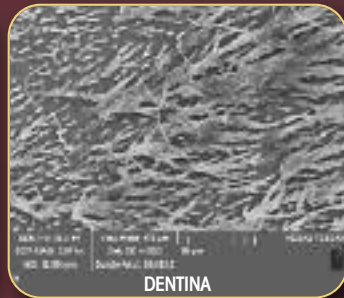
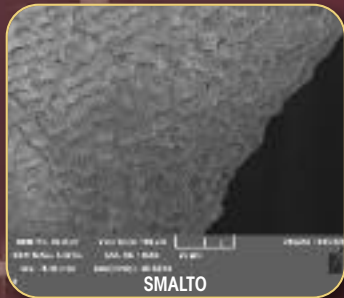
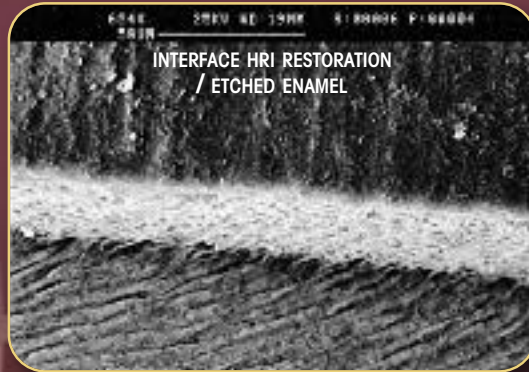
## SELF ETCHING

- Bond strength values over the average industry\*:
  - 24 MPa on dentine
  - 17 MPa on no-etched enamel
  - 20 MPa on etched enamel
- Special composition in water solution
- Primer containing 10-MDP monomer for a better adhesion on enamel, dentin and on metal alloys



Treated Enamel and dentine with Ena Bond SE (images at electron microscope SEM)

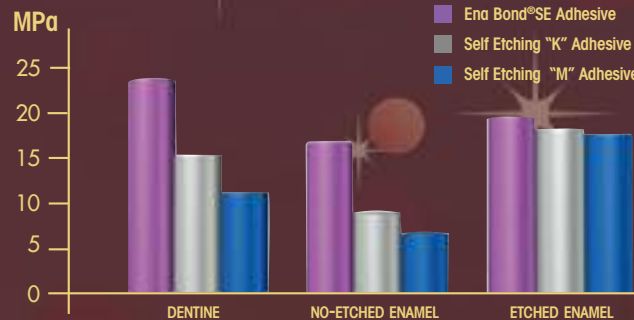
Microscopy made by University of Tor Vergata (Rome-Italy) Prof. Francesco Mangani, who contributed to the realization of Ena Bond SE after 3 years of research and tests.



Enamel and dentine treated with Ena Bond SE (images at electron microscope SEM)

The microscopy shows the enamel surface and the "resin tags" that put in evidence the penetration of Ena Bond SE in dentine tubules (Prof. Vassilios Kaitsas)

### Micro Tensile Bond Strength

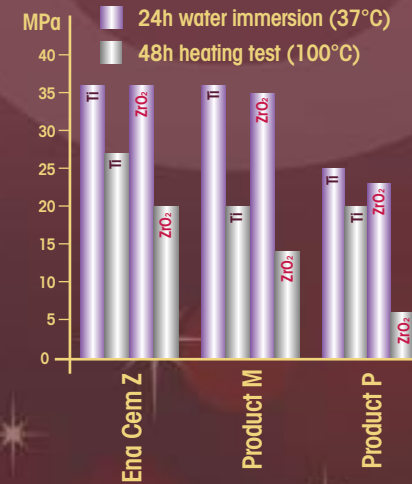


\* Comparison of the adhesion data of Ena Bond SE with two different self-etching adhesive systems with Primer University of Chieti - Italy (Prof. Camillo D'Arcangelo)

## SELF CURING CEMENT FOR ZIRCONIA

Self-curing cement with special primer for luting of zirconia (ZrO<sub>2</sub>) prosthodontic appliances on zirconia or titanium (Ti) abutment

### Share Bond Strength



**CPCZK** Ena Cem<sup>z</sup> for zirconia Introductory Kit:  
Self curing cement 8 g  
Primer 5 ml

**CPCZ** Ena Cem<sup>z</sup> for zirconia Self curing cement 8 g

**CPCZP** Ena Cem<sup>z</sup> for zirconia Primer 5 ml

**ENA**  **cem<sup>z</sup>**

ADHESION: **3** SAFE OPTIONS

**ENA**  **bond**

## SELF CURING CEMENT FOR ZIRCONIA



with Special Primer



### ONE-BOTTLE

COSM300

<b>ENA BOND ONE-BOTTLE ADHESIVE</b>	
Ena Bond light curing Bonding	5 ml
Ena Etch Phosphoric acid 37%	2 ml
Accessories	

Refill

<b>COSM300A</b> Ena Bond light curing Bonding	5 ml
<b>COSM300D</b> Ena Bond catalyst	5 ml
<b>COSM101B</b> Ena Etch Phosphoric acid 37%	29 ml

### TWO-BOTTLE

COSM300K

<b>ENA BOND TWO-BOTTLE ADHESIVE</b>	
Ena Bond light curing Bonding Primer	5 ml
Ena Seal light curing resin	5 ml
Ena Etch Phosphoric acid 37%	2 ml
Accessories	

Refill

<b>COSM300A</b> Ena Bond light curing Bonding	5 ml
<b>COSZ10</b> Ena Seal light curing resin	5 ml

### SELF-ETCHING

CFOTK

<b>ENA BOND SE SELF-ETCHING ADHESIVE</b>	
Ena Bond SE Primer	5 ml
Ena Bond SE light curing resin	5 ml
Ena Etch Phosphoric acid 37%	2 ml
Accessories	

CFOT

<b>ENA BOND SE SELF-ETCHING ADHESIVE</b>	
Ena Bond SE Primer	5 ml
Ena Bond SE light curing resin	5 ml

Refill

<b>CFOTP</b> Ena Bond SE Primer	5 ml
<b>CFOTS</b> Ena Bond SE light curing resin	5 ml



Micerium S.p.A.  
Via G. Marconi, 83-16036 Avegno (GE) Italy  
Tel. (+39) 0185 7887 870 • Fax (+39) 0185 7887 970  
hfo@micerium.it • www.micerium.com

File: Endbond 08 v1. 4. 07-2017