

# SL silver line Gel

with Aloe, Cannabis extract  
Colloidal Silver (10 ppm)



## INDICATIONS

- >> Aphthae, Ulcers, Recurrent aphthous stomatitis, Gingivitis, Periodontitis
- >> Mucositis from radiotherapy and chemotherapy
- >> Oral surgery, Difficult extractions
- >> Implantology
- >> Traumatic ulcers from dentures and orthodontic appliances
- >> Burning Mouth Syndrome

## Properties

- >> Adheres to the oral mucosa
- >> Forms a protective film
- >> Concentrated formulation with Colloidal Silver (10 ppm), antibacterial-antiviral effect, neutral ph
- >> Based on cannabis extract, aloe, hyaluronic acid and vitamin E
- >> Free of fluoride, sugars, mattifying agents, alcohol, fragrances, petroleum derivatives, silicones and parabens

## Benefits

- >> Gives rapid relief
- >> Eliminates burning sensation
- >> Protects the oral mucosa
- >> Thanks to its antioxidant function ensures the well-being and hygiene of the mouth

« COLLOIDAL SILVER GEL »  
Natural antibacterial - antiviral effect »

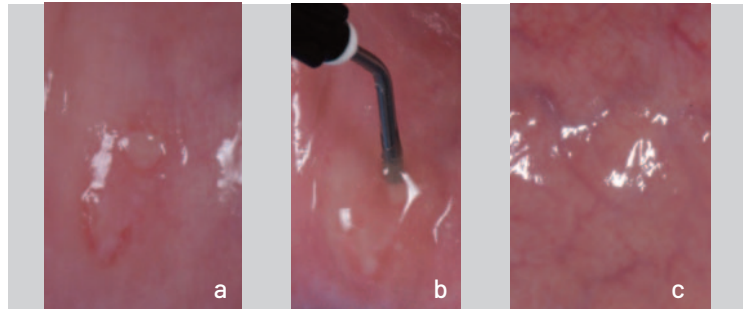
## PROTOCOL

1. For canker sores, ulcers and recurrent aphthous stomatitis, the patient is advised to apply the gel 2 or 3 times a day without rinsing to the affected areas for about one minute.
2. For gingivitis and periodontitis, the gel is applied after the non-surgical periodontal therapy session and the patient is advised to use the gel 2 or 3 times a day without rinsing in the affected areas for approximately one minute.
3. Colloidal silver gel adheres well to the oral mucosa and creates a protective film, making it ideal for oral surgery and extractions, and is recommended for application inside the socket and over sutures.
4. For implant operations, it should be applied after implant insertion and after the sutures have been completed.
5. In the case of traumatic ulcers from removable dentures and orthodontic appliances, the patient is advised to apply the gel under the saddle in contact with the gums.
6. For patients with Burning Mouth Syndrome, the patient is advised to apply the gel 2 or 3 times a day to the entire mouth for approximately 1 minute without rinsing.

## METHODS OF USE

Colloidal silver gel is applied using specific syringes with a disposable tip, which facilitate the insertion of the gel into periodontal pockets, into alveoli after dental avulsions and in all indications on oral mucosa. Syringes with a tip allow for greater precision during application and greater dosage control. Refilling the syringe is easy.

## Aphthae



a) Clinical image of the canker sore - b) Application of silver gel  
c) Clinical situation after treatment, the gel soothes the discomfort and speeds up healing

## Clinical case



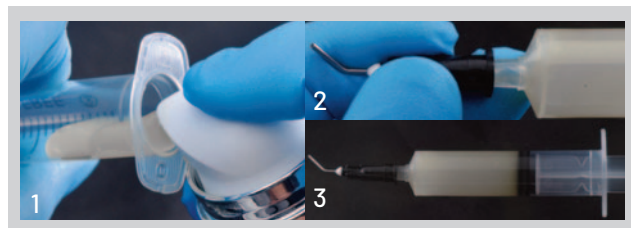
Clinical and radiographic image  
initial periodontal defect

Application of the  
Silver Line gel



Clinical and radiographic image after 12  
months, note the bone regeneration.

## Syringe refill



- 1) Removing the plunger and inserting the gel into it
- 2) Assembly of applicator tip
- 3) Plunger insertion